

Enroll Now for 2023-2024 After-School at HCE!



- Flexible Scheduling
- Smaller Ratios
- Part-time & Full-time
- Hands-on Learning
- Fun Weekly Themes

iKids U[®] Onsite at Hunters Creek Elementary School

Welcome to iKids U, an onsite, all-inclusive, and customizable after-school program! Each day students have the opportunity to participate in an "Enrichment" class, "One on One" instruction, or "Stay & Play" with friends. Each full-time participation day includes activity of choice, recreation, and homework assistance. There is also a part-time option available to participate in an enrichment activity only after school.



3 Payment Options:

- Full Payment - Save 5%**
Calculated by totaling Fall and Spring Semester tuition less 5%.
- Two Payments**
Fall Semester tuition (Payment 1) is due upon registration. Spring Semester tuition (Payment 2) is automatically charged on Nov. 1.
- Installment Plan**
Calculated by totaling Fall and Spring Semester tuition and dividing by 10 payments. First installment payment is charged upon registration. The remaining 9 installments are automatically charged on the first of each month Sept. 1 to May 1.

PROGRAM SCHEDULE

Select an activity for each day you are registering. Program dates follow the school calendar.

FALL SEMESTER 2023

MONDAY	TUESDAY	WEDNESDAY	THURSDAY	FRIDAY
Enrichment: Robotics	Enrichment: Sewing 1st - 5th Sports	Enrichment: Cooking	Enrichment: Art Karate	Enrichment: French
Stay & Play	Stay & Play	Stay & Play	Stay & Play	Stay & Play
One on One: Piano Tutoring	One on One: Piano Tutoring	One on One: Piano Tutoring	One on One: Piano Tutoring	One on One: Piano Tutoring

SPRING SEMESTER 2024

MONDAY	TUESDAY	WEDNESDAY	THURSDAY	FRIDAY
Enrichment: Science	Enrichment: Sewing 1st - 5th Sports	Enrichment: Cooking	Enrichment: Art Karate	Enrichment: French
Stay & Play	Stay & Play	Stay & Play	Stay & Play	Stay & Play
One on One: Piano Tutoring	One on One: Piano Tutoring	One on One: Piano Tutoring	One on One: Piano Tutoring	One on One: Piano Tutoring

Students may register for 1 to 5 days per week. There is a \$35 non-refundable registration fee. There are no refunds upon registration and all withdrawals incur a \$50 administrative fee.

SEMESTER TUITION (Installment Plan)

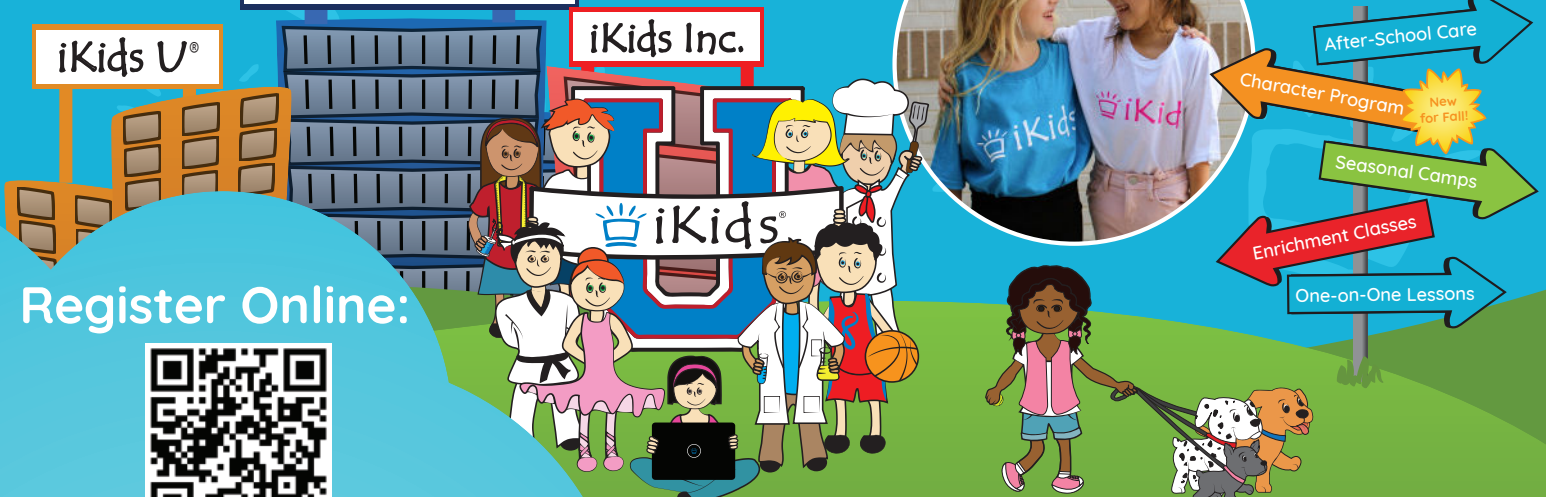
Days per Week	Includes activity of choice (Stay & Play, Enrichment, or One on One) plus recreation, and homework assistance daily until 6 PM.			Includes enrichment activity only until 4 PM.
	Stay & Play	Enrichment	One on One	Enrichment Only
1	\$475 (\$95)	\$625 (\$125)	\$1250 (\$250)	\$350 (\$70)
2	\$825 (\$165)	\$1150 (\$230)	\$2450 (\$490)	\$675 (\$135)
3	\$1150 (\$230)	\$1625 (\$325)		\$975 (\$195)
4	\$1450 (\$290)	\$2075 (\$415)		\$1225 (\$245)
5	\$1725 (\$345)	\$2550 (\$510)		\$1495 (\$299)

Tuition Calculation Example:
Stay & Play 1 Day/Week (\$475) + Enrichment 2 Days/Week (\$1150) = \$1625/Semester or \$325/Installment



iKids U[®]

iKids Inc.



Register Online:



www.ikidsinc.com

Registration begins March 1 for the 2023 - 2024 school year.

713-665-5200 • www.ikidsinc.com • support@ikidsinc.com

iKids Inc. is your one-stop out-of-school shop offering the flexibility you need with the care you can trust! Providing enriching programs essential to your child's development since 2007.